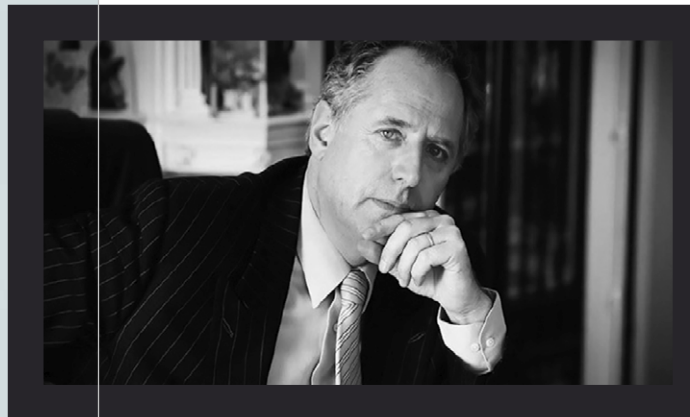


An aerial photograph of Stowe House and Stowe Park in Leicestershire, England, taken at sunrise. The scene is bathed in a warm, golden light. In the foreground, the large, classical Stowe House is visible, featuring a prominent portico with columns. A large, circular lawn in front of the house is partially covered in snow. To the right of the house, a long, curved colonnade extends across the lawn. In the middle ground, a large, rectangular pond reflects the sky and the surrounding trees. The background shows a vast, open landscape with rolling hills and scattered trees, all under a hazy, sunlit sky. The entire image is framed by a thin green border.

Stowe

Our Legacy

Leaving a gift to
Stowe in your Will



As we look to the future, Stowe's collective hope is to increase the number of bursaries and free school places that we can offer to talented girls and boys so that they can fulfil their potential.

Our vision

The vision of our founding Headmaster, JF Roxburgh, of a modern, humane and liberal independent school is even more relevant in today's complex, changing and challenging society. For nearly one hundred years, Stowe has provided a rich and diverse educational experience, rooted in the belief that each pupil has unique talents and qualities waiting to be discovered.

Stowe celebrates the excitement of learning and embraces intellectual discovery, art and science, sport, outdoor education, service and leadership. Stowe prides itself on academic rigour while encouraging Stoics to think for themselves and challenge conventional orthodoxies. Since Stowe's foundation in 1923, the School has educated leaders, innovators and entrepreneurs – inspiring individuals to make a positive impact on their communities: at Stowe, locally, nationally and globally.

Our ethos is to create Change Makers. We value each pupil and our culture of continuous improvement inspires everyone to become the best version of themselves.

A Stowe education empowers pupils to navigate, adapt and thrive in uncertain and turbulent times. Stowe will always educate pupils to excel in exams, but there is much more to

a Stowe education: we teach Stoics how to interpret and solve complex problems, develop their skills in original thinking and creativity, understand and harness their emotional intelligence and collaborate and work in teams. Our vision is to create a school which enables and empowers every Stoic to leave Stowe ready to change as the world changes and, in turn, change the world.

Stowe is a school built, largely, on the bequests and philanthropy of Old Stoics, friends and benefactors of Stowe. A legacy to Stowe is one of the most significant ways to make a lasting impact on the education of future generations and we are profoundly grateful to all those who give their support to the School in this way. A legacy increases the scale and scope of bursarial and scholarship awards, augments our facilities and funds the continuing restoration of the Mansion. I do hope you will be inspired by our vision and leave a legacy to Stowe as we embark on the School's second century.

Anthony Wallersteiner

Dr Anthony Wallersteiner

Your legacy

In recent years, we have been very fortunate and grateful to benefit from the extraordinary generosity of Old Stoics and friends of the School, in support of Stowe School Foundation and Stowe House Preservation Trust. Many have chosen to make gifts during their lifetime, allowing them to witness and experience the impact that their generosity has had. For many others, leaving a bequest to Stowe in their Will is the most manageable and tax-efficient way of supporting the School, at whatever level and for whichever particular purpose they might choose. In the few pages that follow, we outline some of the reasons that our legators have so generously chosen to give their support to Stowe in this way.

Creating a lasting mark

In its relatively short history, Stowe has established itself as one of the country's best-known schools – known for its ethos of fostering the individual, the breadth and distinction with which Old Stoics have served our country and, of course, the sublime and unparalleled beauty of its surroundings.

Every generation of Stoics has relied on the vision and generosity of those who have been before – and by leaving a legacy to Stowe, at whatever level it may be, you will be creating a lasting mark at our School and giving future Stoics the best possible educational opportunities.

Changing lives

Our vision is for Stoics to become the Change Makers of the future – equipped with the skills and understanding they will need to make positive change in the world of which they will be part.

We would encourage you to become a Change Maker too. Whether your motivation is to 'give something back' to the place where you spent your formative years, to support one of the particular causes (see page 10), or simply to allow future children to have some of the same opportunities that you benefitted from – by leaving a legacy to Stowe you will be shaping the lives of future Stoics for the better and forever.



Securing the future



Stowe is still a relatively young school, without the centuries-old endowments that other schools enjoy. For much of its first century, the School faced the considerable financial challenges of maintaining the ducal estate and the historic House. As our partnerships were forged with the National Trust and Stowe House Preservation Trust (SHPT) in recent decades, we have been able to look forward to a more secure future, supported by the remarkable generosity and involvement of members of our Stowe community.

The Campaign for Stowe and the mission of our twin charities (The Stowe School Foundation and The Stowe House Preservation Trust) reflect that vibrant community – and lie at the core of Stowe's future vision and prosperity. By leaving a legacy to Stowe, you will be helping to secure the future of Stowe and ensure that it continues to play a part in shaping the heritage and educational landscape of our nation.

Why I left a gift to Stowe in my Will



Chris Atkinson
(Chatham 59)

"After spending more than half a lifetime at Stowe, he's bound to be biased" I hear you say. Well, to some extent, that may be true but during my long association with the School, as a boy, a parent and grandparent of Stoics and a Master and Housemaster, I have been privileged to see our alma mater from all angles and witness its development over the past seven decades – and never have I ceased to be amazed at what has been achieved by Stowe in its short history. Bob Drayson, Stowe's fourth Headmaster, once remarked, "What a damned silly place to put a school – but I'm mighty glad they did!" Referring, of course, to Stowe's unique and magnificent setting that, together with the extraordinary range of academic, sporting and cultural opportunities on offer, provide Stoics in their formative years with a start in life that has to be second to none.

As a result, the achievements of Old Stoics have been remarkable for both the huge range of careers undertaken and the heights attained. It has been a personal joy to follow the successes of many of my

former charges and they in turn are now supporting Stowe as both parents and benefactors. Indeed, it is a continuous process whereby success breeds success and Old Stoics have played a crucial part in the present very healthy state of a great school.

And so to the future. Consistent with its liberal foundation, the School recognises that the opportunities of a Stowe education should be open to all deserving boys and girls and, with the announcement of Change 100, a massive investment in the future is now underway. I feel strongly that I want to be part of that future and, as well as recognising the benefits I have enjoyed in the past, I have left Stowe a legacy in my Will – 'a final gesture' you might say!



Zair Berry
(Chandos 72)

There are few events that had more impact on my life than my education at the modern public school that is Stowe.

I was a shy child, not an academic nor an accomplished sportsman – criteria you'd expect to be a requirement for success at a traditional private establishment in the 1960's – but Stowe was different.

It was a turbulent time; my father had passed away when I was 10. He had reserved me a place and paid some of the fees for an education at his alma mater Westminster, subject to my passing the entry exam. That did not happen. My family had had connections with Stowe before WWII; an uncle in the 1930's, my grandmother who read French plays with the first headmaster JF, and my mother who was courted by a former pupil and a School Tutor at the time. Not much choice then – Stowe became the preferred option. Unfortunately, funds were in short supply but my determined mother worked hard to subsidise the fees and I was accepted.

After a year or two at Stowe I grew fond of the

place, finding solace in developing my creative skills making furniture and building boats in the school workshops. Stowe built my confidence, it gave me an opportunity to live in a place of beauty, an understanding of the importance of embracing diversity and showing respect for others.

During my five years at Stowe, I was oblivious to the financial restraints until after I had left. Then I discovered that the School had helped subsidise my fees during the last two years of my education and I realised I would not have been at Stowe without that assistance.

There are so many children whose financial circumstances could never support them at Stowe but, given the chance, they could benefit enormously from the opportunity. The assistance I was given has allowed me to succeed albeit modestly and if I can give one or two young people that chance now, then Stowe's investment in me 50 years ago will have paid off.

Where your gift can be invested

It is your choice how your legacy will create an impact



Bursaries

By directing your bequest towards the Stowe School Foundation (Registered Charity No. 1071363) and, specifically, its fund for Bursaries, you will be helping to provide the life-changing chance of a Stowe education to talented children who would otherwise not have that opportunity.

Your donation will form part of an endowment fund that will never decrease, and the income it generates every year will be used to give generations of talented children the chance to be defined by their ambition, not their circumstances. As part of our Change 100 appeal, our target is to build – over the



coming 10 to 15 years – a fund of £100 million. We will help not just a few, but many boys and girls to realise their full potential and to become Change Makers of the future.

Facilities

Over recent years, the generosity of our donors has enabled Stowe to improve significantly the quality of the School's infrastructure and the educational opportunities we are now able to provide.

By directing your bequest to Stowe School Foundation and, specifically, its Facilities Fund, you will be supporting and enabling Stowe to continue to invest in providing the very best facilities and opportunities imaginable in the decades ahead. There may be a particular academic, artistic or sporting sphere that appeals to you, and we would be delighted to speak to you and advise you on how this might best be included in the wording and scope of your bequest.



Restoration of the Mansion

The Stowe House Preservation Trust (Registered Charity No. 1066272) is entrusted with the restoration and preservation of the Mansion. As a separate charity to the School, it not only ensures that returning the building to its former glory does not come at the expense of the education of pupils, but also enables us to raise vital funds from the wider heritage community.

Although many of the immediate and urgent phases of restoration have been completed in recent years, the task of maintaining Stowe House will be a timeless one. Your bequest to SHPT will be invaluable in allowing us to ensure that Stowe is preserved in its magnificent condition and that visitors from around the world can continue to appreciate and enjoy its remarkable story.

Roxburgh Society

The Roxburgh Society was founded twenty years ago by the late Lord Quinton (Temple 42). In that time, invaluable funds have been gifted to Stowe and have played a significant part in the development of the School and the restoration of Stowe House. For many Old Stoics, leaving a bequest to Stowe is the most manageable and efficient way that they can support the School and ensure that it is best placed to provide a life-changing education to many more children for generations to come.

The Roxburgh Society is open to all Old Stoics and friends of Stowe who pledge to bequeath a legacy in their Will. Membership is entirely optional of course, however the Society gathers at least once a year for a lunch held at the School which is always a most enjoyable event and a lovely opportunity to spend time with other like-minded Old Stoics.

“Without Stowe,
I might never
have discovered
my true ability
and talents.”

*George Eatwell
(former Stowe bursary recipient)*



Next steps

Stowe would be forever grateful to benefit from your generosity in the form of a legacy – at whatever level it may be.

Many of us start tax planning for our inheritance at an early stage – and leaving a legacy to a registered charity, such as The Stowe School Foundation or The Stowe House Preservation Trust can enable you to enhance the tax efficiency of your estate.

Currently, estates in excess of £325,000 are subject to Inheritance Tax but if you are in a position to leave at

least 10% of your estate to charity, the tax due may be paid at a reduced rate of 36% rather than 40%.

The examples below show the tax paid by an estate worth £1,000,000 with and without charitable bequests of £100,000. Such a level of giving – a very generous one at that – would reduce your tax bill by £63,000 and only cost the rest of the estate a net amount of £37,000.

Tax paid on an estate with no legacy to Stowe		Tax paid on an estate with a pecuniary Legacy to Stowe	
Value of estate, including house	£1,000,000	Value of estate, including house	£1,000,000
Legacy to Stowe and/or other charities	None	Legacy to Stowe and/or other charities	£100,000
Amount free of tax	£325,000	Amount free of tax	£325,000
Amount subject to tax of 40%	£675,000	Amount subject to tax of 36%	£575,000
Amount payable to beneficiaries	£730,000	Amount payable to beneficiaries	£693,000
Tax paid	£270,000	Tax paid	£207,000

Net cost of £100k legacy – £37,000

This is a simplistic illustration, which demonstrates the taxable savings that may be available, however you can get more detailed information and advice from your accountant, your lawyer, or from the gov.uk website.

In the enclosed leaflets we explain how you can take the next steps in leaving a bequest to Stowe in your Will. If you have any questions, please do not hesitate to contact the Development Manager at Stowe on 01280 818320, or campaign@stowe.co.uk

“From the moment I arrived at Stowe I threw myself into every aspect of school life and it really broadened my horizons and gave me the confidence to believe I could make a difference in the world.”

*Sonya Sander
(Stowe bursary recipient and Head Girl, 2019-2020)*

Codicil Form

Leaving a bequest to Stowe

Different types of legacies and bequests

**Thank you for
considering a bequest
to Stowe in your Will.**

If you would like any further information
about leaving a legacy to Stowe, please
contact the Development Office:

Stowe

Stowe School, Stowe, Buckingham MK18 5EH

01280 818320

campaign@stowe.co.uk

www.stowe.co.uk